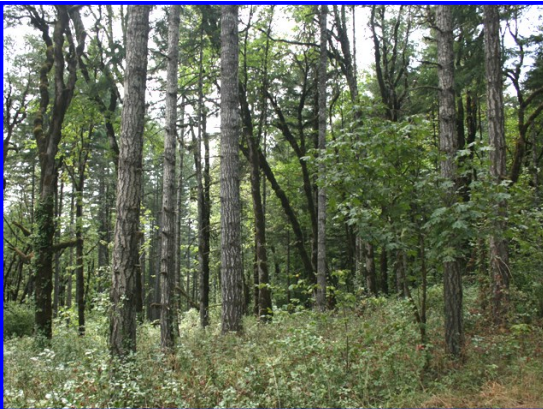


80 Acres with 2 Homes

Mountain Views, Timber, Suitable for Vineyard



22400 SW Eagle Point Rd. Sheridan, Oregon 97378

\$539,000.

- 80.43 +/- Acres
- Timbered Property with South Slopes & Vineyard Soils
- 1200 SF Manufactured Home with Basement & Shop
- 1344 SF Manufactured Home with Shop
- Dividable into 2 legal lots of record with a home on each parcel per Yamhill County planner
- Replacement Dwelling Permits for both homes
- Beautiful Building Sites with Spectacular Views of Mt. Hood and Mt. Jefferson
- Extensive Merchantable Timber
- McMinnville Schools
- Yamhill County-TL 600, Section 31, T4S, R5W, W.M.
- Taxes are approximately \$788.85 annually
- RMLS #15567510

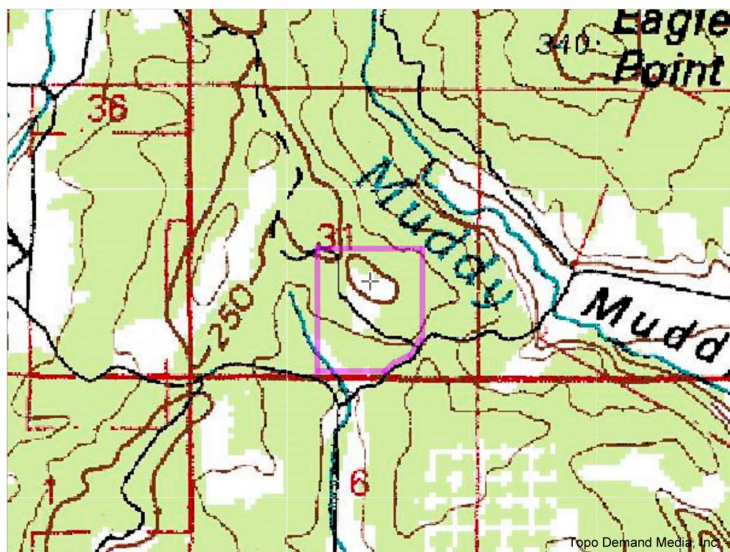


Information Contained Herein from Sources Deemed Reliable, But Not Guaranteed

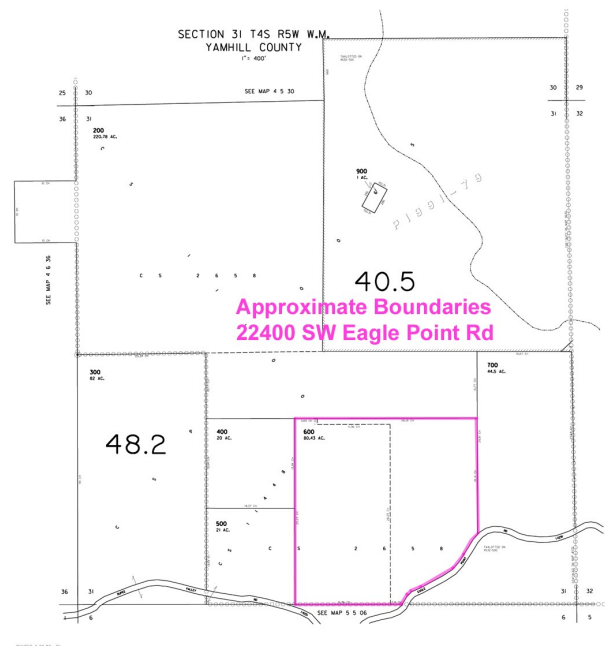
80 +/- Acres with 2 Homes



Approximate Boundaries
22400 SW Eagle Point Rd.



Center: 45.1774°N 123.3486°W
 Elevation at center: 919 feet (280 meters)
 Quad: Yamhill River
 Drg Name: f45123a1
 Drg Source Scale: 1:100,000
 Projection: NAD83/WGS84



Approximate Boundaries
22400 SW Eagle Point Rd

Eugene B. Wolf, Broker
 (503) 682-1789 (Office)
 (503) 704-5262 (Cellular)
www.wolfnw.com

WOLF NW Properties, Inc.
 30003 SW 35th Dr. Wilsonville, Oregon 97070