

30 +/- Acres Willamette Valley Irrigated Farm



9184 Bishop Road, Aumsville, OR 97325

\$395,000.

- 30 +/- Acres Willamette Valley Irrigated Farm
- Classic 1915 3-Bedroom Farmhouse
- Irrigation from Santiam Water Control District
- Predominantly Class II Salem Gravelly Silt Loam Soil per NRCS—Top Tier Hazelnut soil
- Level and Gently Rolling
- Cozy Pellet Stove in Home
- Convenient Location 8+/- Miles from Salem
- Marion County
- Zoned EFU
- Subject to farm lease
- Annual Taxes: \$774.00
- Tax Lot 300, Sec 6, T9S, R1W, W.M
- RMLS #16460829



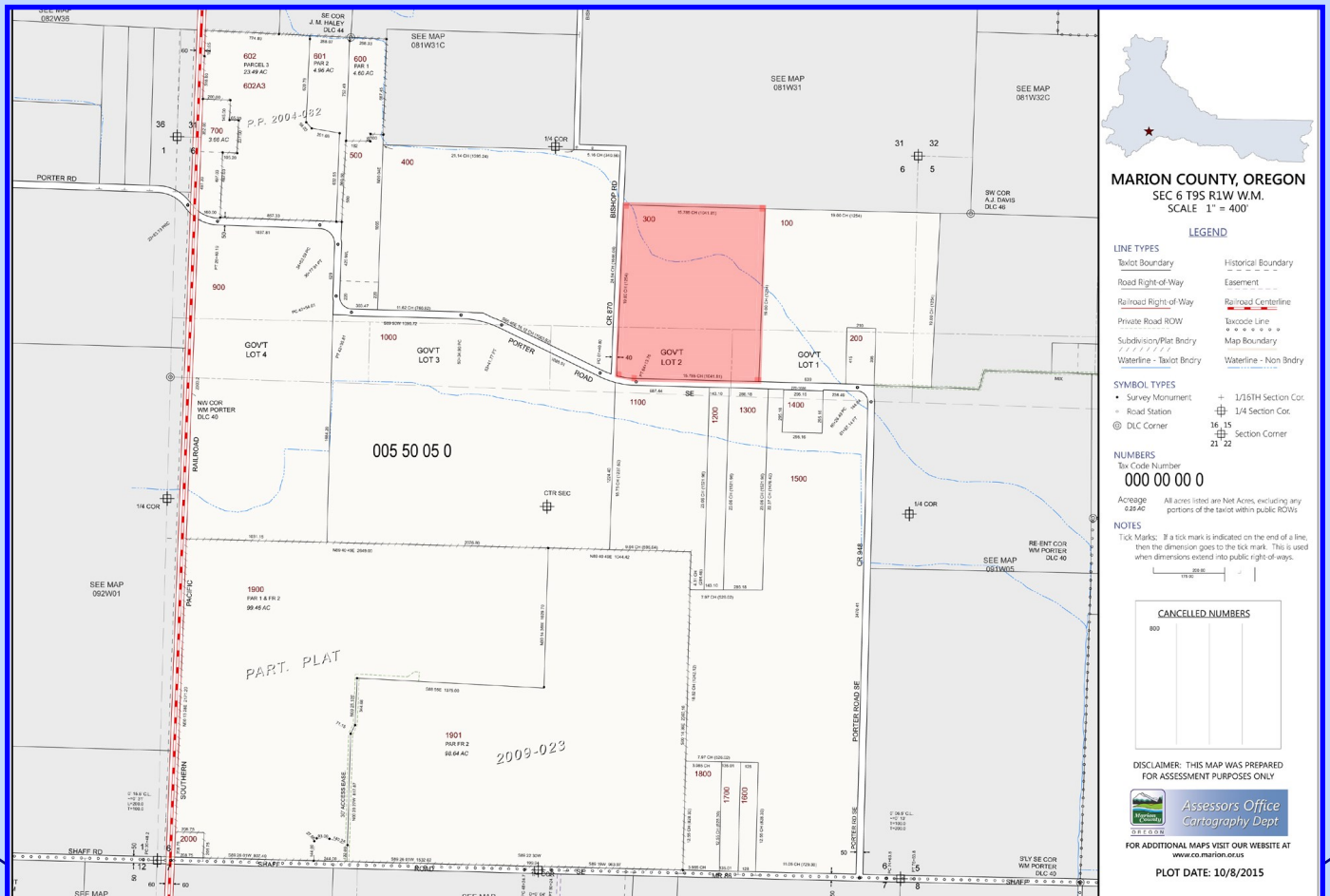
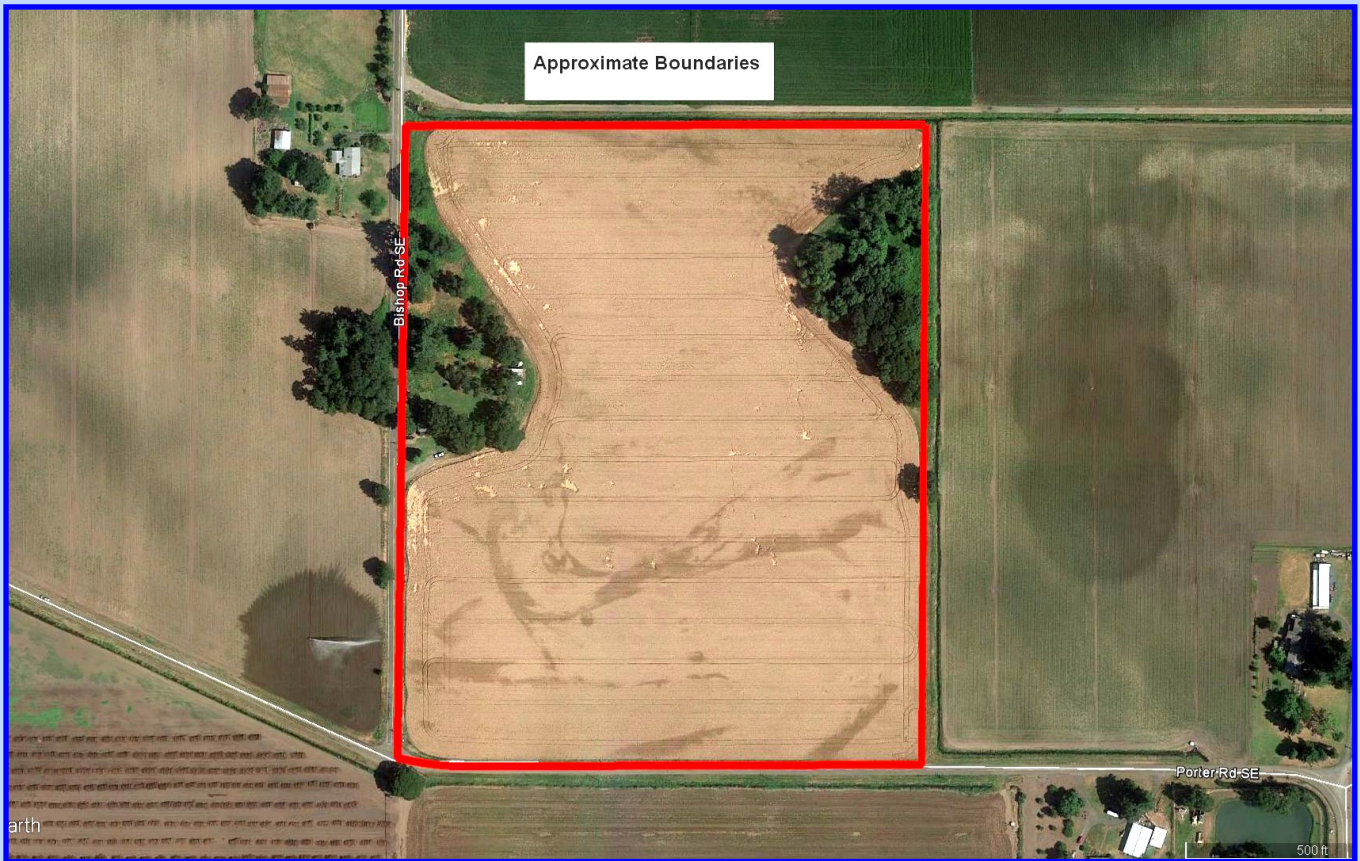
Eugene Wolf, Principal Broker

503-682-1789 office
503-704-5262 cell
www.wolfnw.com

WOLF NW Properties, Inc.

Information Contained Herein from Sources Deemed Reliable, But Not Guaranteed

30 +/- Acre Willamette Valley Irrigated Farm



MARION COUNTY, OREGON
 SEC 6 T9S R1W W.M.
 SCALE 1" = 400'

LEGEND

- LINE TYPES**
- Taxlot Boundary
 - Road Right-of-Way
 - Railroad Right-of-Way
 - Private Road ROW
 - Subdivision/Plat Body
 - Waterline - Taxlot Body
 - Historical Boundary
 - Easement
 - Railroad Centerline
 - Taxcode Line
 - Map Boundary
 - Waterline - Non Body

- SYMBOL TYPES**
- Survey Monument
 - Road Station
 - DLC Corner
 - 1/16TH Section Cor
 - 1/4 Section Cor
 - 1/8 Section Corner

NUMBERS

To-Code Number
000 00 00 0

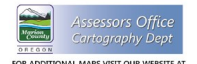
Acreage: 322 AC All acres listed are Net Acres, excluding any portions of the taxlot within public ROWs.

NOTES

Tick Marks: If a tick mark is indicated on the end of a line, then the dimension goes to the tick mark. This is used when dimensions extend into public right-of-ways.

CANCELLED NUMBERS
800

DISCLAIMER: THIS MAP WAS PREPARED FOR ASSESSMENT PURPOSES ONLY



FOR ADDITIONAL MAPS VISIT OUR WEBSITE AT www.co.marion.or.us

PLOT DATE: 10/8/2015