

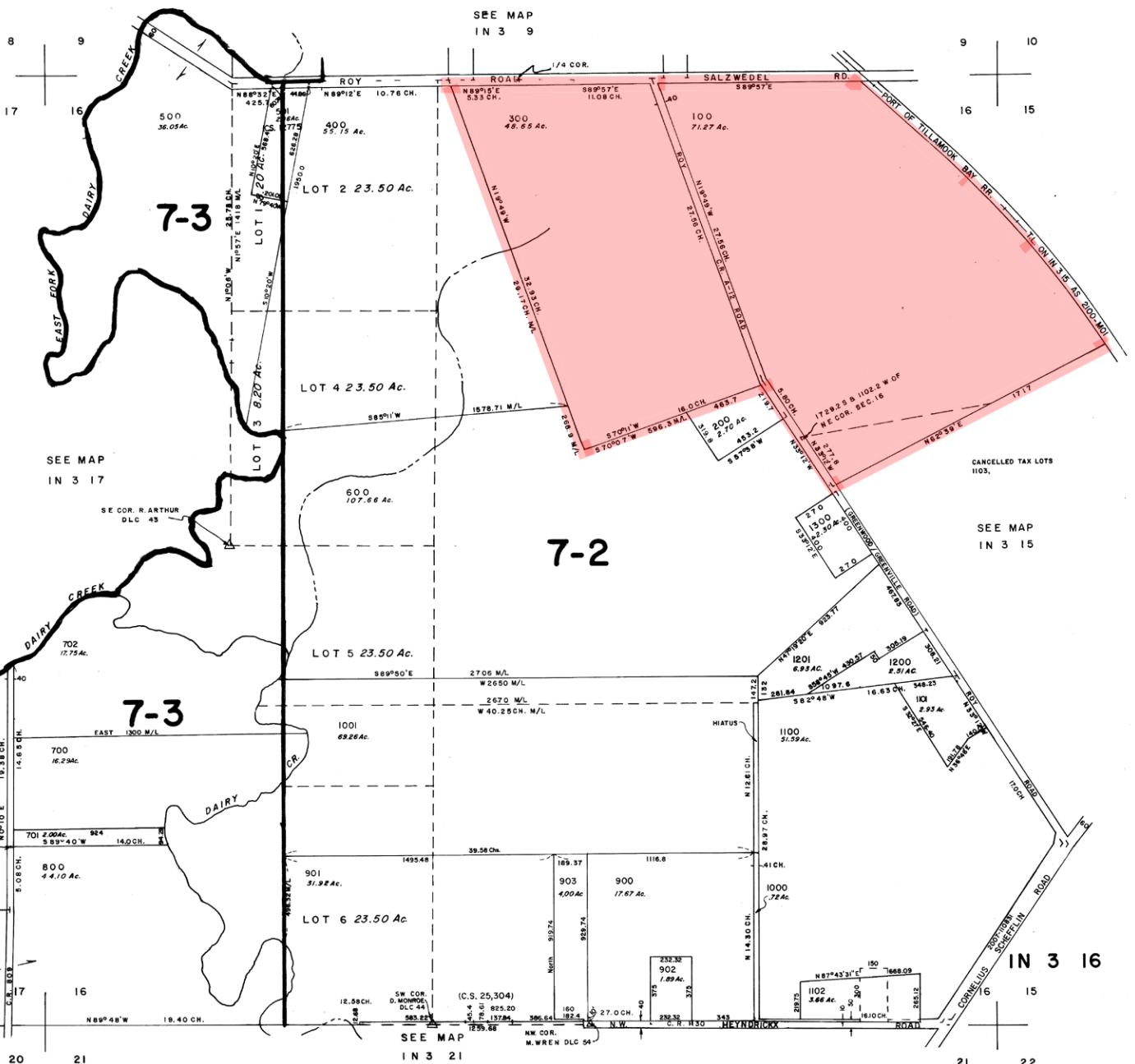
SECTION 16 T1N R3W W.M.

WASHINGTON COUNTY OREGON

SCALE 1"=400'

IN 3 16

T.L.800A-I Cancelled



SEE MAP
IN 3 9

SEE MAP
IN 3 17

CANCELLED TAX LOTS
1103.

SEE MAP
IN 3 15

IN 3 16

SEE MAP
IN 3 21

20

21

21

22