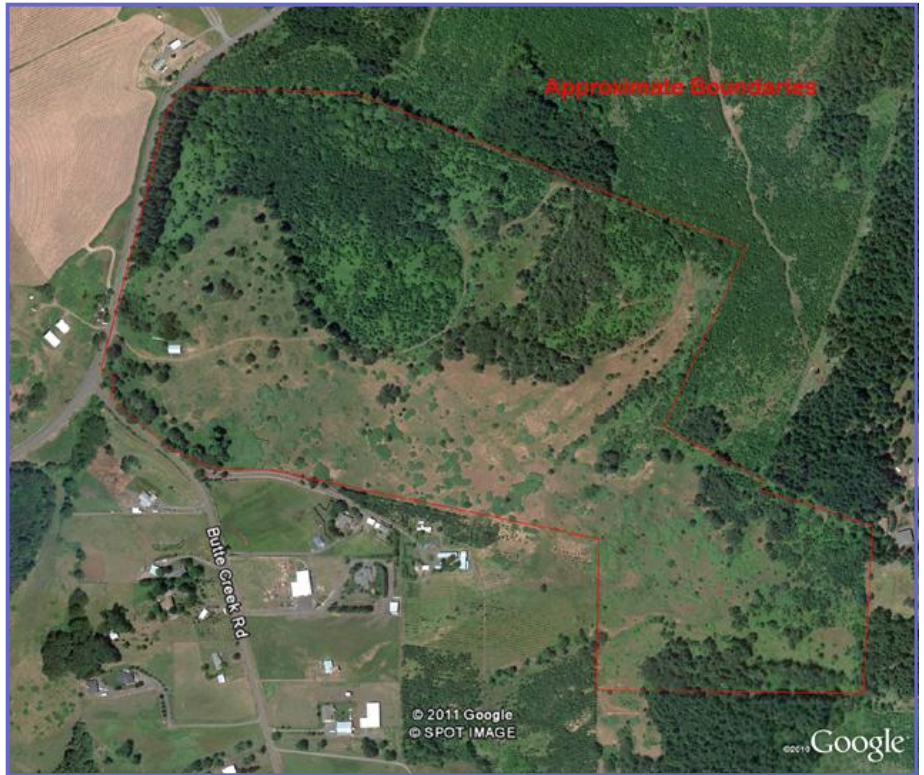


155 Acres Willamette Valley Land

Rock Hill Rd. Lebanon, Oregon 97355



\$480,000.

- 155.6 +/- Acres
- Beautiful View
- Likely Buildable - Buyer to perform own due diligence to verify buildability with Linn County
- Pasture and Trees
- Barn
- Fenced for Cattle
- Linn County
- Approximately 11 miles southeast of Exit #228 off I-5 at Hwy 34 (Corvallis/Lebanon)
- Annual Taxes: Approx. \$527.23
- Tax Lot 300, Section 33, T12S, R2W, W.M
- Realtors Multiple Listing System #11459785

Eugene B. Wolf, Broker
(503) 682-1789 (Office)
(503) 704-5262 (Cellular)
www.wolfnw.com

WOLF NW Properties, Inc.
30003 SW 35th Dr. Wilsonville, Oregon 97070

Information Contained Herein from Sources Deemed Reliable, But Not Guaranteed

