

# 15 Acres Buildable Land for Sale

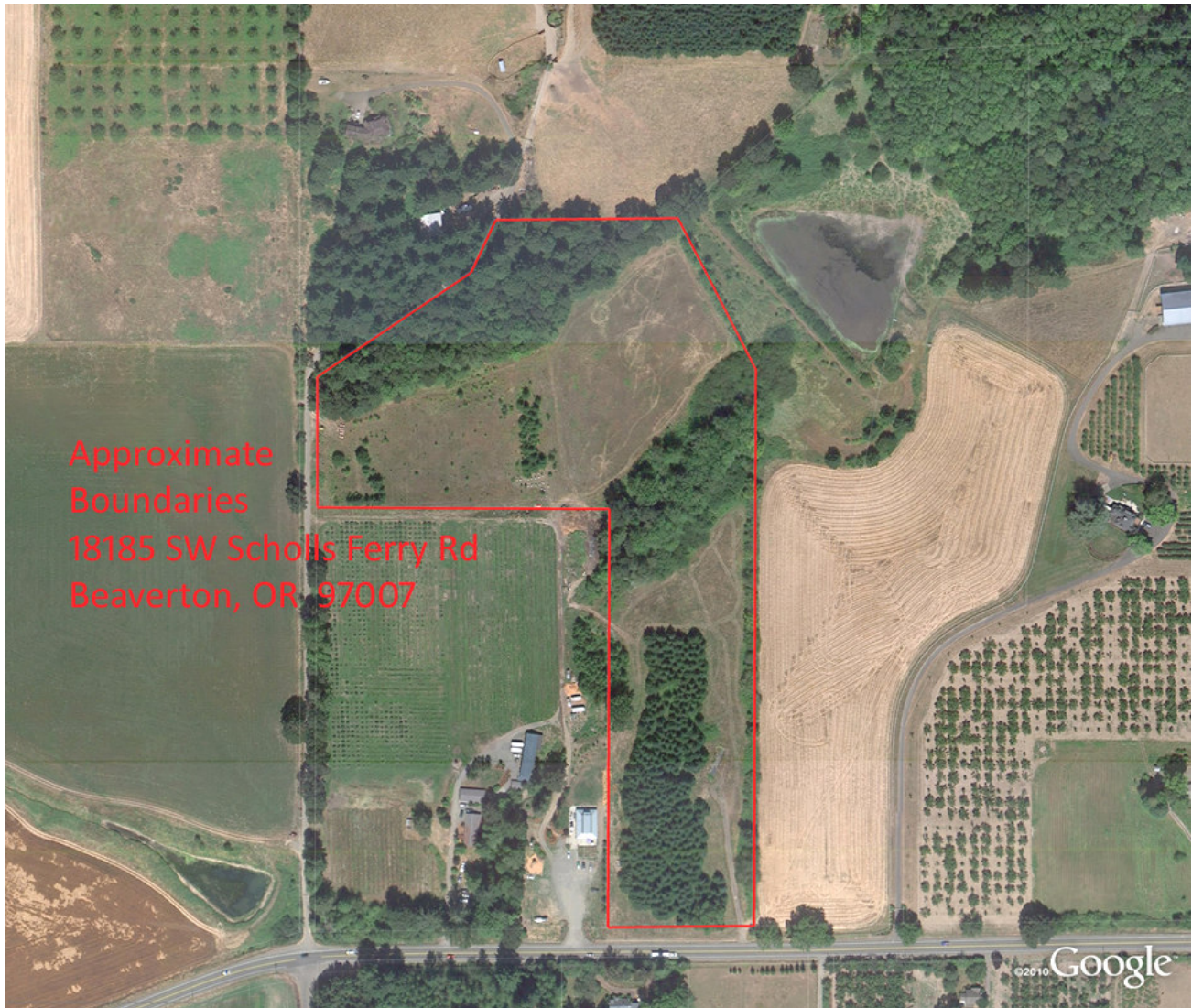
18185 SW Scholls Ferry Rd. Beaverton, Oregon



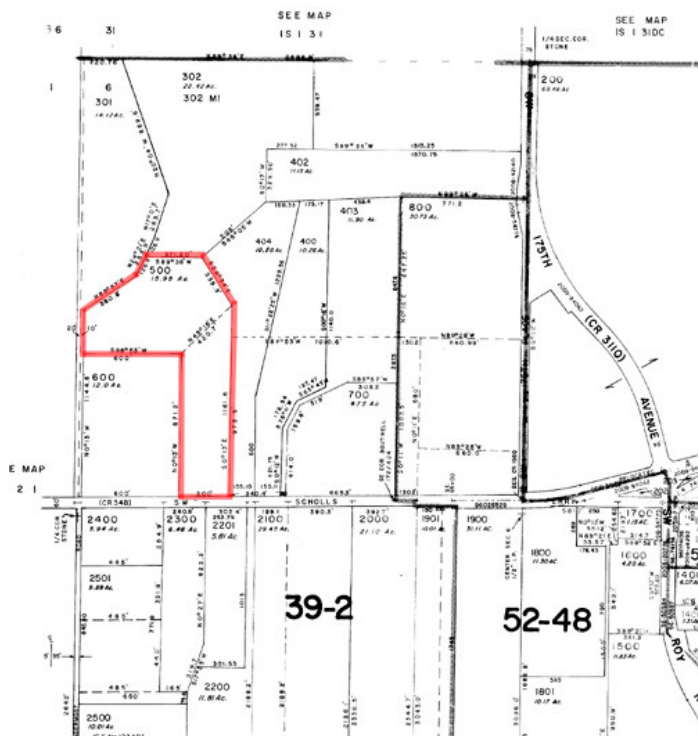
- **\$510,000.**
- 15.95 +/- Acres Buildable Land for Sale
- Great Location only 5 miles from Washington Square Mall
- Conditional Replacement Dwelling Permit Approved by Washington County— Previous Home has been removed
- Well is already in
- Designated Urban Reserve Area 6B
- Washington County
- Tax Lot 500, Section 6, T2S, R1W, W.M.
- Realtors Multiple Listing #11412538

Eugene B. Wolf, Broker  
(503) 682-1789 (Office)  
(503) 704-5262 (Cellular)  
[www.wolfnw.com](http://www.wolfnw.com)

**WOLF NW Properties, Inc.**  
30003 SW 35th Dr. Wilsonville, Oregon 97070



SECTION 6 T2S R1W W.M.  
WASHINGTON COUNTY OREGON  
SCALE 1"=400'



Eugene B. Wolf, Broker  
(503) 682-1789 (Office)  
(503) 704-5262 (Cellular)  
[www.wolfnw.com](http://www.wolfnw.com)

**WOLF NW Properties, Inc.**  
30003 SW 35th Dr. Wilsonville, Oregon 97070