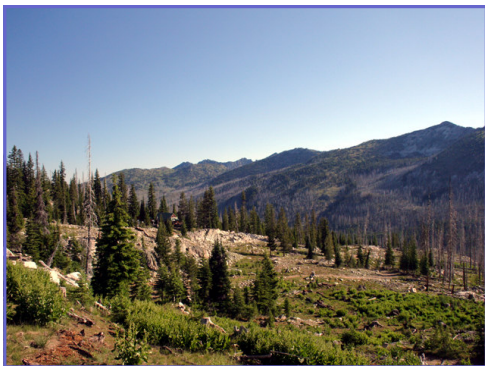


234 Acre "Off the Grid" Mountain Retreat Silver Creek Rd. Sumpter, Oregon



- **\$795,000.**
- 234 +/- Acres near Sumpter, Oregon
- Furnished Cabin, Guest House and Shop
- 14 Patented Gold Mine Claims
- Fabulous Deer and Elk Hunting Opportunities
- End of the Road Privacy behind 3 locked Gates
- "Off the Grid" Power provided by Solar/Wind system with inverter and back-up Generator. 12 Volt DC Lighting System
- Spring Water piped to House and Guest House/Sauna
- 1000 +/- sq. ft. Cabin Sleeps Six with many Amenities.... Including Satellite TV, Propane On-Demand Hot Water, Shower, Propane Refrigerator and Stove, Woodstove, Covered Porch and Barbeque/ Observation Deck
- 350 +/- sq. ft. Guest House has a Cedar-lined, Wood-Fired Sauna, Propane On-Demand Hot Water Heater, Shower, Propane Space Heater Covered Porch (Sleeps 4)
- Bordered by North Fork John Day Wilderness, Wallowa-Whitman National Forest and Private Patented Mining Claims
- Frontage on the headwaters of the North Fork of the North Fork of the John Day River
- Landowner Preference Tags for 2 Buck Deer and 2 Bull Elk annually
- Mining Claim for 170.60 acre "Baby McKee", patented 1907, consisting of Baby McKee, Hillside, Cincinnati, Gold-Bar, Calipso, Calipso Fraction, Pittsburgh, Insert, Sundance, and Chloride Lode Claims
- Mining Claim for 63.66 acre "Last Chance", patented 1907, consisting of Last Chance, Sunset, Snowshoe, and Annex Lode Claims
- Gold Assays by AMAX in 1980 available
- Shop/Garage with Solar Lights, Generator back-up, Cabinets, Locked Storage, ATV Parking, & Wood Storage
- Tax Lots 500 and 600, T8S, R36E, W.M. (Grant County)
- Annual Taxes: Approximately \$657.63
- Realtor's Multiple Listing #10073200



**Approximate Boundaries
234 Acres near
Sumpter, Oregon
Grant County**

