



United States
Department of
Agriculture



NRCS

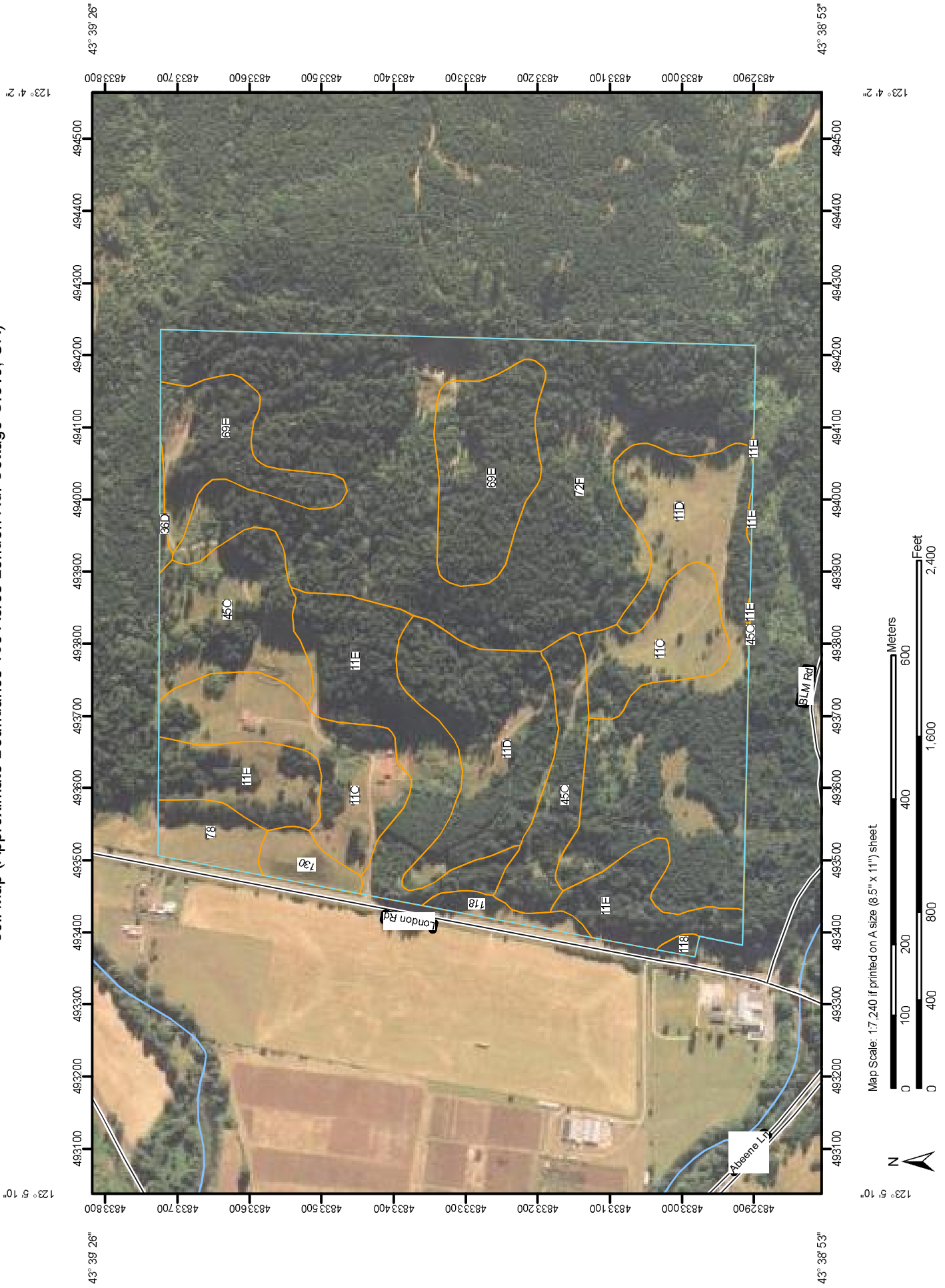
Natural
Resources
Conservation
Service

A product of the National
Cooperative Soil Survey,
a joint effort of the United
States Department of
Agriculture and other
Federal agencies, State
agencies including the
Agricultural Experiment
Stations, and local
participants

Custom Soil Resource Report for Lane County Area, Oregon



Custom Soil Resource Report Soil Map (Approximate Boundaries 160 Acres London Rd. Cottage Grove, OR)



Map Unit Legend (Approximate Boundaries 160 Acres London Rd. Cottage Grove, OR)

Lane County Area, Oregon (OR637)			
Map Unit Symbol	Map Unit Name	Acres in AOI	Percent of AOI
11C	Bellpine silty clay loam, 3 to 12 percent slopes	15.6	9.7%
11D	Bellpine silty clay loam, 12 to 20 percent slopes	36.5	22.7%
11E	Bellpine silty clay loam, 20 to 30 percent slopes	21.8	13.6%
36D	Cumley silty clay loam, 2 to 20 percent slopes	0.3	0.2%
45C	Dupee silt loam, 3 to 20 percent slopes	14.1	8.8%
69E	Kinney cobbly loam, slump, 3 to 30 percent slopes	15.7	9.8%
72F	Klickitat stony loam, 30 to 50 percent south slopes	50.0	31.1%
78	McAlpin silty clay loam	2.9	1.8%
118	Salem gravelly silt loam	1.6	1.0%
130	Waldo silty clay loam	1.9	1.2%
Totals for Area of Interest		160.6	100.0%

Map Unit Descriptions (Approximate Boundaries 160 Acres London Rd. Cottage Grove, OR)

The map units delineated on the detailed soil maps in a soil survey represent the soils or miscellaneous areas in the survey area. The map unit descriptions, along with the maps, can be used to determine the composition and properties of a unit.

A map unit delineation on a soil map represents an area dominated by one or more major kinds of soil or miscellaneous areas. A map unit is identified and named according to the taxonomic classification of the dominant soils. Within a taxonomic class there are precisely defined limits for the properties of the soils. On the landscape, however, the soils are natural phenomena, and they have the characteristic variability of all natural phenomena. Thus, the range of some observed properties may extend beyond the limits defined for a taxonomic class. Areas of soils of a single taxonomic class rarely, if ever, can be mapped without including areas of other taxonomic classes. Consequently, every map unit is made up of the soils or miscellaneous areas for which it is named and some minor components that belong to taxonomic classes other than those of the major soils.

Lane County Area, Oregon

11C—Bellpine silty clay loam, 3 to 12 percent slopes

Map Unit Setting

Elevation: 400 to 1,400 feet

Mean annual precipitation: 40 to 60 inches

Mean annual air temperature: 50 to 52 degrees F

Frost-free period: 165 to 210 days

Map Unit Composition

Bellpine and similar soils: 85 percent

Description of Bellpine

Setting

Landform: Hillslopes

Landform position (two-dimensional): Shoulder, summit

Landform position (three-dimensional): Nose slope, interfluve, crest

Down-slope shape: Linear, convex

Across-slope shape: Linear, convex

Parent material: Colluvium and residuum derived from sandstone, siltstone, and tuff breccia

Properties and qualities

Slope: 3 to 12 percent

Depth to restrictive feature: 20 to 40 inches to paralithic bedrock

Drainage class: Well drained

Capacity of the most limiting layer to transmit water (Ksat): Moderately high (0.20 to 0.57 in/hr)

Depth to water table: More than 80 inches

Frequency of flooding: None

Frequency of ponding: None

Available water capacity: Low (about 5.7 inches)

Interpretive groups

Land capability (nonirrigated): 3e

Typical profile

0 to 13 inches: Silty clay loam

13 to 34 inches: Silty clay

34 to 44 inches: Weathered bedrock

11D—Bellpine silty clay loam, 12 to 20 percent slopes

Map Unit Setting

Elevation: 400 to 1,400 feet

Mean annual precipitation: 40 to 60 inches

Mean annual air temperature: 50 to 52 degrees F

Frost-free period: 165 to 210 days

Map Unit Composition

Bellpine and similar soils: 85 percent

Description of Bellpine

Setting

Landform: Hillslopes

Landform position (two-dimensional): Summit, shoulder

Landform position (three-dimensional): Interfluve, nose slope, crest

Down-slope shape: Linear

Across-slope shape: Linear

Parent material: Colluvium and residuum derived from sandstone, siltstone, and tuff breccia

Properties and qualities

Slope: 12 to 20 percent

Depth to restrictive feature: 20 to 40 inches to paralithic bedrock

Drainage class: Well drained

Capacity of the most limiting layer to transmit water (Ksat): Moderately high (0.20 to 0.57 in/hr)

Depth to water table: More than 80 inches

Frequency of flooding: None

Frequency of ponding: None

Available water capacity: Low (about 5.7 inches)

Interpretive groups

Land capability (nonirrigated): 3e

Typical profile

0 to 13 inches: Silty clay loam

13 to 34 inches: Silty clay

34 to 44 inches: Weathered bedrock

11E—Bellpine silty clay loam, 20 to 30 percent slopes

Map Unit Setting

Elevation: 400 to 1,400 feet

Mean annual precipitation: 40 to 60 inches

Mean annual air temperature: 50 to 52 degrees F

Frost-free period: 165 to 210 days

Map Unit Composition

Bellpine and similar soils: 85 percent

Description of Bellpine

Setting

Landform: Hillslopes

Landform position (two-dimensional): Summit, shoulder

Landform position (three-dimensional): Crest, interfluve, nose slope

Down-slope shape: Linear

Across-slope shape: Linear

Custom Soil Resource Report

Parent material: Colluvium and residuum derived from sandstone, siltstone, and tuff breccia

Properties and qualities

Slope: 20 to 30 percent

Depth to restrictive feature: 20 to 40 inches to paralithic bedrock

Drainage class: Well drained

Capacity of the most limiting layer to transmit water (Ksat): Moderately high (0.20 to 0.57 in/hr)

Depth to water table: More than 80 inches

Frequency of flooding: None

Frequency of ponding: None

Available water capacity: Low (about 5.7 inches)

Interpretive groups

Land capability (nonirrigated): 4e

Typical profile

0 to 13 inches: Silty clay loam

13 to 34 inches: Silty clay

34 to 44 inches: Weathered bedrock

36D—Cumley silty clay loam, 2 to 20 percent slopes

Map Unit Setting

Elevation: 800 to 3,000 feet

Mean annual precipitation: 60 to 90 inches

Mean annual air temperature: 46 to 52 degrees F

Frost-free period: 140 to 190 days

Map Unit Composition

Cumley and similar soils: 80 percent

Minor components: 4 percent

Description of Cumley

Setting

Landform: Mountains

Landform position (two-dimensional): Footslope

Landform position (three-dimensional): Mountainbase

Down-slope shape: Linear

Across-slope shape: Linear

Parent material: Colluvium and glacial till from basic igneous rock

Properties and qualities

Slope: 2 to 20 percent

Depth to restrictive feature: More than 80 inches

Drainage class: Moderately well drained

Capacity of the most limiting layer to transmit water (Ksat): Moderately high (0.20 to 0.57 in/hr)

Depth to water table: About 24 to 36 inches

Frequency of flooding: None

Frequency of ponding: None

Custom Soil Resource Report

Available water capacity: High (about 9.9 inches)

Interpretive groups

Land capability (nonirrigated): 6e

Typical profile

0 to 1 inches: Slightly decomposed plant material

1 to 15 inches: Silty clay loam

15 to 60 inches: Clay

Minor Components

Minniece

Percent of map unit: 4 percent

Landform: Depressions

45C—Dupee silt loam, 3 to 20 percent slopes

Map Unit Setting

Elevation: 200 to 2,000 feet

Mean annual precipitation: 30 to 60 inches

Mean annual air temperature: 50 to 55 degrees F

Frost-free period: 160 to 235 days

Map Unit Composition

Dupee and similar soils: 85 percent

Minor components: 4 percent

Description of Dupee

Setting

Landform: Depressions on hills, drainageways on hills

Landform position (two-dimensional): Footslope, toeslope

Landform position (three-dimensional): Base slope

Down-slope shape: Linear

Across-slope shape: Linear

Parent material: Colluvium derived from sandstone

Properties and qualities

Slope: 3 to 20 percent

Depth to restrictive feature: 40 to 60 inches to paralithic bedrock

Drainage class: Somewhat poorly drained

Capacity of the most limiting layer to transmit water (Ksat): Moderately high (0.20 to 0.57 in/hr)

Depth to water table: About 18 to 36 inches

Frequency of flooding: None

Frequency of ponding: None

Available water capacity: High (about 11.1 inches)

Interpretive groups

Land capability (nonirrigated): 3e

Typical profile

0 to 12 inches: Silt loam
12 to 55 inches: Silty clay
55 to 65 inches: Weathered bedrock

Minor Components

Panther

Percent of map unit: 4 percent
Landform: Swales

69E—Kinney cobbly loam, slump, 3 to 30 percent slopes

Map Unit Setting

Elevation: 1,000 to 3,300 feet
Mean annual precipitation: 60 to 90 inches
Mean annual air temperature: 48 to 52 degrees F
Frost-free period: 120 to 165 days

Map Unit Composition

Kinney and similar soils: 80 percent
Minor components: 4 percent

Description of Kinney

Setting

Landform: Mountains
Landform position (two-dimensional): Shoulder, summit
Landform position (three-dimensional): Mountaintop
Down-slope shape: Linear
Across-slope shape: Linear
Parent material: Glacial till over tuffaceous breccia and basic igneous rock

Properties and qualities

Slope: 3 to 30 percent
Depth to restrictive feature: 40 to 60 inches to paralithic bedrock
Drainage class: Well drained
Capacity of the most limiting layer to transmit water (Ksat): Moderately high to high
(0.57 to 1.98 in/hr)
Depth to water table: More than 80 inches
Frequency of flooding: None
Frequency of ponding: None
Available water capacity: High (about 11.0 inches)

Interpretive groups

Land capability (nonirrigated): 6e

Typical profile

0 to 1 inches: Moderately decomposed plant material
1 to 17 inches: Cobbly loam
17 to 51 inches: Cobbly clay loam

Custom Soil Resource Report

51 to 59 inches: Very cobbly loam
59 to 69 inches: Weathered bedrock

Minor Components

Aquepts, seeps

Percent of map unit: 4 percent
Landform: Depressions

72F—Klickitat stony loam, 30 to 50 percent south slopes

Map Unit Setting

Elevation: 500 to 3,400 feet
Mean annual precipitation: 60 to 100 inches
Mean annual air temperature: 46 to 54 degrees F
Frost-free period: 150 to 200 days

Map Unit Composition

Klickitat, south, and similar soils: 85 percent

Description of Klickitat, South

Setting

Landform: Mountains, mountains
Landform position (two-dimensional): Backslope, footslope
Landform position (three-dimensional): Mountainflank
Down-slope shape: Linear
Across-slope shape: Linear
Parent material: Colluvium and residuum derived from igneous rock

Properties and qualities

Slope: 30 to 50 percent
Depth to restrictive feature: 40 to 60 inches to lithic bedrock
Drainage class: Well drained
Capacity of the most limiting layer to transmit water (Ksat): Moderately high to high
(0.57 to 1.98 in/hr)
Depth to water table: More than 80 inches
Frequency of flooding: None
Frequency of ponding: None
Available water capacity: Low (about 4.9 inches)

Interpretive groups

Land capability (nonirrigated): 6s

Typical profile

0 to 2 inches: Slightly decomposed plant material
2 to 15 inches: Stony loam
15 to 41 inches: Very cobbly clay loam
41 to 52 inches: Extremely cobbly loam
52 to 56 inches: Unweathered bedrock

78—McAlpin silty clay loam

Map Unit Setting

Elevation: 100 to 1,500 feet

Mean annual precipitation: 30 to 60 inches

Mean annual air temperature: 50 to 55 degrees F

Frost-free period: 160 to 235 days

Map Unit Composition

McAlpin and similar soils: 85 percent

Minor components: 11 percent

Description of McAlpin

Setting

Landform: Flood plains, alluvial fans

Landform position (three-dimensional): Tread

Down-slope shape: Linear

Across-slope shape: Linear

Parent material: Fine-textured mixed alluvium

Properties and qualities

Slope: 0 to 3 percent

Depth to restrictive feature: More than 80 inches

Drainage class: Moderately well drained

Capacity of the most limiting layer to transmit water (Ksat): Moderately high (0.20 to 0.57 in/hr)

Depth to water table: About 24 to 36 inches

Frequency of flooding: Rare

Frequency of ponding: None

Available water capacity: High (about 10.1 inches)

Interpretive groups

Land capability classification (irrigated): 2w

Land capability (nonirrigated): 2w

Typical profile

0 to 14 inches: Silty clay loam

14 to 60 inches: Silty clay

Minor Components

Waldo

Percent of map unit: 4 percent

Landform: Flood plains

Riverwash

Percent of map unit: 4 percent

Landform: Flood plains

Fluvents

Percent of map unit: 3 percent

Landform: Flood plains

118—Salem gravelly silt loam

Map Unit Setting

Elevation: 300 to 800 feet

Mean annual precipitation: 40 to 60 inches

Mean annual air temperature: 52 to 54 degrees F

Frost-free period: 165 to 210 days

Map Unit Composition

Salem and similar soils: 85 percent

Description of Salem

Setting

Landform: Stream terraces

Landform position (three-dimensional): Tread

Down-slope shape: Linear

Across-slope shape: Linear

Parent material: Gravelly mixed alluvium

Properties and qualities

Slope: 0 to 3 percent

Depth to restrictive feature: More than 80 inches

Drainage class: Well drained

Capacity of the most limiting layer to transmit water (Ksat): Moderately high to high
(0.57 to 1.98 in/hr)

Depth to water table: More than 80 inches

Frequency of flooding: None

Frequency of ponding: None

Available water capacity: Low (about 4.8 inches)

Interpretive groups

Land capability classification (irrigated): 2s

Land capability (nonirrigated): 2s

Typical profile

0 to 7 inches: Gravelly silt loam

7 to 26 inches: Gravelly clay loam

26 to 60 inches: Very gravelly sand

130—Waldo silty clay loam

Map Unit Setting

Elevation: 90 to 2,500 feet

Mean annual precipitation: 30 to 60 inches

Mean annual air temperature: 50 to 55 degrees F

Custom Soil Resource Report

Frost-free period: 150 to 235 days

Map Unit Composition

Waldo and similar soils: 85 percent

Minor components: 10 percent

Description of Waldo

Setting

Landform: Flood plains, terraces

Landform position (three-dimensional): Tread

Down-slope shape: Concave, linear

Across-slope shape: Linear

Parent material: Mixed silty and clayey alluvium

Properties and qualities

Slope: 0 to 3 percent

Depth to restrictive feature: More than 80 inches

Drainage class: Poorly drained

Capacity of the most limiting layer to transmit water (Ksat): Moderately low to moderately high (0.06 to 0.20 in/hr)

Depth to water table: About 0 to 6 inches

Frequency of flooding: Occasional

Frequency of ponding: None

Available water capacity: High (about 10.0 inches)

Interpretive groups

Land capability classification (irrigated): 3w

Land capability (nonirrigated): 3w

Typical profile

0 to 11 inches: Silty clay loam

11 to 60 inches: Clay

Minor Components

Bashaw

Percent of map unit: 5 percent

Landform: Terraces

Wapato

Percent of map unit: 5 percent

Landform: Flood plains