

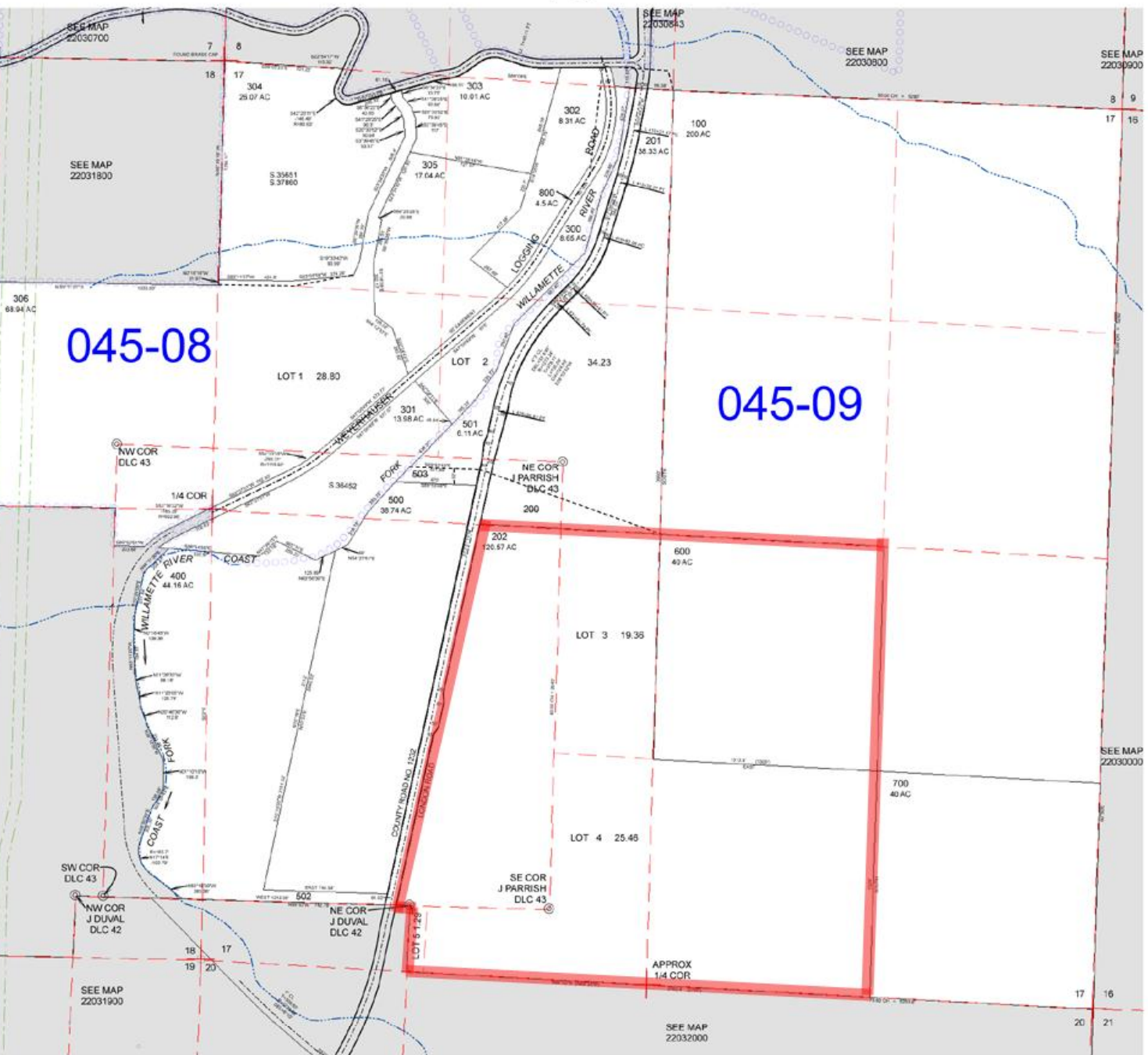
FOR ASSESSMENT AND TAXATION ONLY

SECTION 17 T.22S. R.3W. W.M.
Lane County
1" = 400'

REVISIONS:
15042688 - LOCATED, CONVERT MAP TO GIS
3/30/2009 - LOCATED, MERGE TO GIS INFO TO GIS

22031700

GIS DATA
3/30/2009 8:55:10 AM
CANCELLED
200
502
503



045-08

045-09

22031700